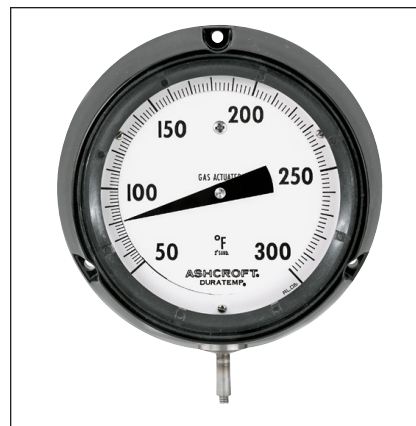


- Exclusive movementless design resists shock and vibration – no gears to wear or misalign resulting in increased instrument life
- Gas-operated molecular sieve
- No elevation error
- Mercury free
- One bulb size for all ranges
- ±1% full-span accuracy
- Maxivision® dial
- Readily available – two to three weeks delivery
- Limited five-year warranty

This hermetically sealed case is designed for applications where extreme moisture or dust is present. Available in a 4½" solid front phenolic turret case, lower connection.



SELECTION TABLE

600H — 45		C60				B01		A1		L07		AK			
Table 1		Table 2				Table 3		Table 4		Table 5		Table 6			
CASE STYLE		CASE SIZE		MOUNTING				BULB STYLES*		ARMOR STYLE		LINE LENGTH		RANGES	
CODE	DESCRIPTION	CODE	SIZE	MOUNTING		CONNECTION		CODE	DESCRIPTION	CODE	DESCRIPTION	CODE	LINE LENGTH	CODE	SINGLE RANGES
				SURFACE	FLUSH	LOWER	REAR								
45	PHENOLIC HERMETICALLY SEALED	C60	4½"	✓		✓		B01	12" Bendable extension with ½ NPT union connection	A1	Stainless Steel Spring	L01	5'	AB	-320/200°F
								B03	Plain bulb with rigid extension, no union			L03	10'	AE	-100/100°F
								B08	Plain bulb with rigid extension, ½ NPT union on armor			L07	20'	AG	-40/180°F
								B17	18" Bendable extension with ½ NPT union connection			L09	30'	AK	20/240°F
								B18	24" Bendable extension with ½ NPT union connection			L13	50'	AL	50/300°F
												L19	80'	AN	50/550°F
														AR	50/750°F
														AT	400/1200°F
														AY	-200/100°C
														BL	-80/40°C
														BN	-40/80°C
														BS	0/120°C
														BT	10/150°C
														BU	0/300°C
														BW	0/400°C
														BJ	200/650°C
														DUAL RANGES	
														CE	20/240°F 0/120°C
														CF	50/550°F 0/300°C
														DR	50/300°F 10/150°C
														DT	-40/180°F -40/80°C

*Minimum recommended insertion length ("u" dimension) in liquids is 4 inches and in gases is 6 inches for standard ¾ x 3" bulb

TO ORDER THIS DURATEMP 600H-45 THERMOMETER:

Select:

1. Case Style: Phenolic Hermetically Sealed _____ Table 1 _____

2. Case Size & Mounting: 4½" Surface, Lower _____ Table 2 _____

3. Bulb Style: 12" Bendable Extension with Union Connection _____ Table 3 _____

4. Armor Style: Stainless Steel Spring _____ Table 4 _____

5. Line Length: 20 feet _____ Table 5 _____

6. Temperature Range: 20/240°F _____ Table 6 _____

7. Options: Stainless Steel Tag _____ (See Page 200) _____

600H 45 C60 B01 A1 L07 AK XNH

Consult factory for guidance in product selection
Phone (203) 385-0217, Fax (203) 385-0602 or
visit our web site at www.ashcroft.com