

## Type 1131 – 2½", 3½", 4", 4½", & 6" Differential Gauge



- Rolling diaphragm actuator
- Stainless steel case
- Ranges from 5 psid-100 psid
- Static pressures up to 3000 psi
- Aluminum<sup>(3)</sup>, brass or stainless steel bodies<sup>(1)</sup>
- Buna-N O-rings (others available)
- Superior magnets for smoother power motion
- Standard or explosion-proof reed switches available
- 5-year warranty

The Type 1131 is utilized for applications where migration of the process media is not permissible. The Type 1131 uses a rolling diaphragm design to separate the high and low-pressure ports to isolate the media and can see up to 3000 psi static pressures. Body materials are available in Aluminum, Brass and Stainless Steel, with Buna, Viton or EPDM seals.<sup>(2)</sup>

#### NOTES:

- (1) Not for use with incompatible media.
- (2) Other wetted parts include stainless steel spring, Teflon piston and ceramic magnet.
- (3) Aluminum bodies not to be used with water or corrosive applications.
- (4) Gauge not designed to see reverse pressure.
- (5) Never pressurize only the low side beyond 25 bar.

#### PRODUCT SPECIFICATIONS

<b>Model Number:</b>	1131
<b>Accuracy (Ascending):</b>	±2%
<b>Migration:</b>	Zero
<b>Ranges:</b>	0-5 psid to 100 psid
<b>Maximum Static Pressure:</b>	3000 psi (all)
<b>Actuator:</b>	Rolling diaphragm
<b>Case Material:</b>	Stainless steel
<b>Dial Size:</b>	2½" (25), 3½" (35), 4" (40), 4½" (45), 6" (60)
<b>Maximum Process Temp.:</b>	175°F/80°C
<b>Body Materials:</b>	Aluminum (F), brass (A), stainless steel (S)
<b>O-Rings/Diaphragm:</b>	Buna-N
<b>Connection Size (Female):</b>	¼ NPT (25)
<b>Connection Location:</b>	In-Line (S), Lower (L), Back (B)
<b>Window:</b>	Glass

#### PRODUCT OPTIONS

<b>Switches<sup>(1)</sup>:</b>		Available
<b>¼ NPTF adaptor:</b>	XGE	Available
<b>Front Flange:</b>	XFF	Available
<b>Viton O-Rings:</b>	XVD	Available
<b>EPDM O-Rings:</b>	XEM	Available

<b>Fill<sup>(3)</sup>:</b>			
Glycerin	L	Standard	
Silicone	XGV	Available	

<b>Window:</b>		
Plastic	XPD	Available

<b>Explosion Proof:</b>	XEK	Available <sup>(2)</sup>
-------------------------	-----	--------------------------

<b>Pipe Mounting Bracket:</b>	XTM	In-line (only)
-------------------------------	-----	----------------

(1) Applicable to switches:  
 XV1 – 1 SPST with DIN plug  
 XV2 – 1 SPST with terminal strip  
 XV3 – 2 SPST with DIN plug  
 XV4 – 2 SPST with terminal strip  
 XV5 – 1 SPDT with DIN plug  
 XV6 – 1 SPDT with terminal strip  
 XV7 – 2 SPDT with DIN plug  
 XV8 – 2 SPDT with terminal strip  
 Adjustable from 30-100% of range  
 Terminal or DIN connected switches are not available with back connection

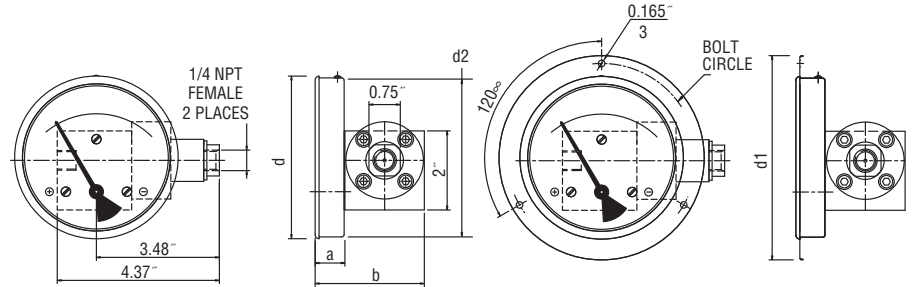
(2) Specify lower or back connection for gauge (not available in-line) and switch type V2, V4, V6, V8

(3) Liquid fill has an effect on accuracy that varies with range and temperature. Liquid filling may be required only in some very severe applications.

**HOW TO ORDER:**

Dial Size: 2½", 3½", 4", 4½", & 6"	25	1131	FD	25S	XXX	30#
Case Type Number: 1131						
Body Material						
Connection Size: ¼ NPTF (25)						
Connection Location: In-line (S), Lower (L), Back (B)						
Optional Features: see above						
Standard Pressure Range						

## Type 1131 – 2½", 3½", 4", 4½", & 6" Differential Gauge



**Type 1131 Dimension Drawing**

Dial Size	a	b	d	d <sup>1</sup>	d <sup>2</sup>	Bolt Circle
2.5"	0.75"	2.74"	2.59"	3.66"	2.55"	3.26"
3.5"	0.75"	2.74"	3.26"	4.29"	3.22"	3.89"
4"	0.75"	2.74"	4.10"	5.15"	4.01"	4.76"
4.5"	0.75"	2.74"	4.71"	5.74"	4.60"	5.35"
6"	0.75"	2.74"	6.07"	7.12"	6.00"	6.73"

**Type 1131 – Standard Ranges**

psi		0-5	0-7	0-10	0-15	0-25	0-30		0-40	0-60	0-100
kPa	0-25		0-50	0-75	0-100		0-200	0-250		0-400	0-700
kg/cm <sup>2</sup> -bar	0-0.25		0-0.5	0-0.75	0-1		0-2	0-2.5		0-4	0-7

### Ratings for Both Standard & Explosion Proof Switches:

#### SPST SWITCH

##### Specifications:

Contact Rating  
10 VA ac (rms) or dc (max)  
Switching Current  
0.5 Amp ac (rms) or dc (max)  
Switch Voltage  
100 Vac/Vdc (max)

#### SPDT SWITCH

##### Specifications:

Contact Rating  
3 VA ac (rms) or dc (max)  
Switching Current  
0.3 Amp ac (rms) or dc (max)  
Switch Voltage  
30 Vac/Vdc (max)

### Explosion Proof Switches Information:

Switches and electrical connections are mounted in an explosion-proof enclosure with UL, CSA, Cenelec and FM approval. The enclosure meets Class 1, Groups B, C, D, Class 2 Groups E, F, G, Class 3, NEMA 7 & 9 and IP 66. Two ¾" electrical conduit connections.