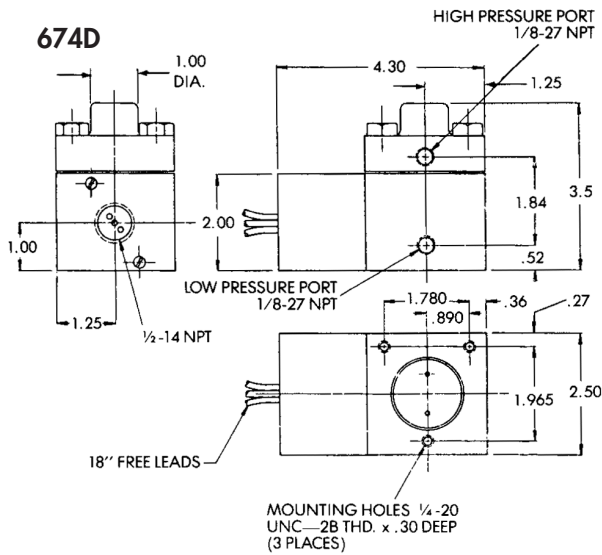


**INSTALLATION DRAWING**



SHIPPING WT.  
APPROX. 45 OZ.  
(1275 GRAMS)

Diff. 2 to 800 psid

**SERIES:  
674D**

**Standard Features:**

- NEMA: 4, 13
- Weatherproof

**AMBIENT TEMP. RANGE**

-30° to 160° F  
-34° to 71° C

**OPERATING AND ORDERING DATA:**

| DIFFERENTIAL SWITCHES<br>MODEL 674D |                                     | 1/8" ALUMINUM<br>PRESSURE PORTS &<br>POLYIMIDE DIAPHRAGM |  | Wetted<br>Parts                    |                                    | Aluminum<br>Polyimide Viton,<br>300 SST |                           |                         |
|-------------------------------------|-------------------------------------|--|--|------------------------------------|------------------------------------|---|---------------------------|-------------------------|
| Max<br>Sys.<br>Press.<br>psi        | Proof<br>(Test)<br>Press.<br>psi    |  | Setting Ranges For Customer Specified Set Points |                                    |                                    |   | Model Number              |                         |
|                                     |                                     |  | Fixed Set-Point Range                            |                                    | Approx. Dead Band                  |   |                           |                         |
|                                     | Both<br>Ports<br>Simul-t-<br>aneous | High<br>Over<br>Low                                      | Low<br>Over<br>High                              | On Incr.<br>Press.<br>psi          | On Decr.<br>Press.<br>psi          | At Bottom<br>of Range<br>psi            | At Top<br>of Range<br>psi | MODEL<br>SPDT-Std.      |
| 3000                                | 4500                                | 2500   | 2500   | 5 to 80<br>81 to 350<br>351 to 800 | 2 to 68<br>67 to 297<br>299 to 680 | 3<br>14<br>60                           | 12<br>52<br>120           | 674D1<br>674D2<br>674D3 |

**Options Code:**

"F" Ethylene Propylene O-ring  
"7008" Gold Contacts

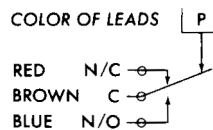
**ELECTRICAL CHARACTERISTICS:**

RATING OF SWITCH ELEMENT

| VOLTS             | AMPERES |      |
|-------------------|---------|------|
|                   | SPDT    | Res. |
| 125 AC - 50/60 Hz | 15      |      |
| 250 AC - 50/60 Hz | 15      |      |
| 480 AC - 50/60 Hz | 15      |      |
| 125 DC            | .4      |      |

**SCHEMATIC AND WIRING CODE:**

SPDT-Standard



**HOW TO ORDER:** Specify model number, add desired "options" listing letter codes first followed by numbers:  
 Custom Control Sensors, Inc. • 21111 Plummer Street, Chatsworth, CA 91311 • Tel: (818)341-4610 • Fax: (818)709-0426  
 e-mail: switchnet@ccsdualsnap.com • http://www.ccsdualsnap.com