

# Wireless Predictive Monitoring Solutions

## About Us

BossPac™ designs and manufactures unique and proven products for the Oil and Gas Industry, as well as Mining and Infrastructure applications. BossPac™ products are utilized in machinery health monitoring, chemical injection optimization, and SCADA remote monitoring and control.

BossPac Engineering and Technology is located in Calgary, Alberta. Our engineering team works with customers and distributors to produce high quality and reliable products and can provide custom designs to satisfy many installation requirements.



**Wireless**

**Reliable**

## Solutions

BossPac™ wireless sensors are the reliable front line worker of our equipment monitoring solution. These self-powered sensors measure velocity, acceleration, temperature, level, and pressure around the clock. Compact and smart, these non-intrusive sensors can be deployed quickly without the headache of costly wiring.

Our solar power end-to-end solutions can be set up anywhere in the world. Equipment conditions are available in real time from onsite, field offices, or headquarters, all simultaneously with any internet connection through the BossPac remote monitoring web portal.



# WASP™



## Vibration Sensor

Measuring Velocity, Acceleration, and Temperature

### Product Highlights

- CSA Class 1, Div 2
- Freq range 10 - 250 Hz
- Amplitude 0 - 16 G's
- 30m (~100') range
- Wireless/Self-Powered
- Non-intrusive
- Simple and fast data collection



## Pressure Sensor

Pressure and Temperature

### Product Highlights

- CSA Class 1, Div 2
- Operating pressure range 0 - 2,000 psi
- Fast update rates
- Temp -40 to +85° C
- Radio frequency - ISM Band 2.45 GHz
- Wireless/Self-powered



## Level Sensor

Fluid Level and Temperature

### Product Highlights

- CSA Class 1, Div 2
- Operating pressure range 0 - 100 psi
- Fast update rates
- Temp -40 to +85° C
- Radio frequency - ISM Band 2.45 GHz
- Wireless/Self-powered



## NEST™ (Receiver)

Wireless system / Gateway Full setup & control

### Product Highlights

- CSA Class 1, Div 2
- Connect 54 WASPs
- Touch Screen
- User defined alarms
- MODBUS output
- Onboard data logging
- Data retrieval by laptop or with SCADA



## SkyNEST

Wireless Satellite Transceiver

### Features

- Portable enclosure
- Self contained system
- Solar powered
- Deployment and data collection anywhere in the world
- Internet based data control with email alerts



## MobiNEST

Wireless Portable Transceiver

### Features

- Monitoring of isolated or problem equipment
- Mobile/Portable kit
- Contains NEST and sensors
- Data retrieval with SCADA or USB flash drive



## Custom Systems

Custom built solutions

### Engineering and Design

- BossPac designs and manufactures all our products and will work with our customers to provide a reliable and suitable solution
- Enclosure or mounting modifications
- Use in combination with existing equipment





## Vibration Sensor

3-Axis readings  
Acceleration and Velocity

### Product Highlights

- Acceleration & velocity
- Operational to -40°C
- Digital NC/NO and 2 analog outputs
- 3 Axis (XYZ) vibration measuring
- MODBUS
- Solid state components



## Divider Block Sensor

Flow monitoring and  
Visual LED feedback

### Product Highlights

- CSA Class 1, Div 2
- Temp -40 to +85° C
- 24V and 5V versions
- Long trouble free life in high vibration environments



## Bluebox Chemical Injection Controller

Chemical injection  
monitoring

### Product Highlights

- Statistical data storage
- Touch Screen
- Fully configurable
- Warnings & shutdowns
- Operational to -40°C
- Non-volatile log storage
- 10 inputs, 8 outputs
- 5V to 24V input power



## Bluebox Vibration & Lubrication Controller

Vibration & Lubrication  
control

### Product Highlights

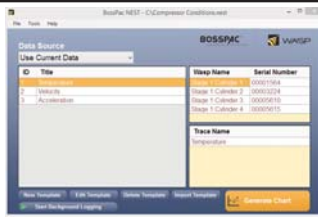
- Statistical data storage
- Touch Screen
- Fully configurable
- Warnings & shutdowns
- Operational to -40°C
- Non-volatile log storage
- 10 inputs, 8 outputs
- 5V to 24V input power



## YourSCADA Remote monitoring and control

### Product Highlights

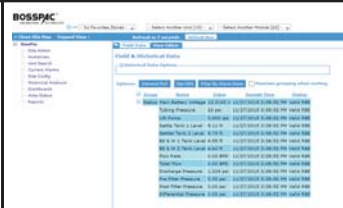
- Web based interface
- Remote data transfer
- MODBUS
- Bidirectional
- Satellite connectivity
- Cost effective
- Easy to configure



## NEST™ Desktop

### Product Highlights

- Store, chart, trend historical data
- Simple user interface
- Reusable templates
- Zoom / pan for details
- Print charts
- Export data to Excel
- Share data



## BossPac™ Remote Monitoring Portal

### Product Highlights

- Global access
- Email & text alerts
- Auto scheduled reports
- Customized view of historical data
- Log field notes
- 3 year data retention



## Third Party Vibration Analysis Services

### Services

- Vibration Analysis
- Remote Diagnostics
- Baseline Information
- Alarm Configuration Parameters
- Operating Envelope
- Expert Advice



**WASP™**

**BOSSPAC™**  
ENGINEERING + TECHNOLOGY

BossPac™ Engineering & Technology with design, development, and manufacturing facility located in Calgary, Alberta is a business focused on Instrumentation, Controls, and Machinery Health Monitoring. Bosspac™ products can be used on rotating equipment in any industry and have been designed from the ground up to meet the rigorous requirements of the oil and gas industry.

Our patented Bosspac™ monitoring control systems provide well-engineered and robust solutions for our customer's specific applications.



## **BossPac™ Engineering and Technology**

Bay 8, 1450 - 28 Street NE  
Calgary, Alberta T2A 7W6 Canada

Ph: 403.216.1226  
Fax: 403.216.5557  
Toll Free: 1.866.616.1226  
Email: [sales@bosspac.com](mailto:sales@bosspac.com)

[www.bosspac.com](http://www.bosspac.com)

**Contact us for a free demonstration**