

- 316 stainless steel wetted parts
- 4½" or 6" dial sizes
- Ranges from 10 psi-1000 psi
- Static pressures from 45 psi-1200 psi depending on the range of the gauge
- Pointer indicator with zero at seven (1127) or twelve o'clock position (1128)
- Built-in back case flange for easy wall mounting

When the process is corrosive to gauges with bronze/brass wetted parts an alternative was to isolate the gauge from the process with capillary and isolators or diaphragm seals. Now, when the process is compatible with 316 stainless steel, Dresser Instrument offers the new Ashcroft® Types 1127 or 1128 differential pressure gauges with 4½" or 6" dials.



**STANDARD RANGES**

Type 1127 (270° dial arc)

Pressure Range (psi)	Figure Interval	Minor Graduation	Static Pressure Limits*
0/10	5	0.2	45
0/20	5	0.2	45
0/30	5	0.5	45
0/60	10	1	90
0/100	10	1	130
0/160	20	2	208
0/200	20	2	260
0/300	50	5	390
0/400	50	5	520
0/600	100	10	780
0/800	100	10	1040
0/1000	100	10	1200

\*Maximum pressure that can be admitted into Bourdon tubes.

Type 1128 (270° dial arc) Zero centered dial

Pressure Range (psi)	Figure Interval	Minor Graduation	Static Pressure Limits*
10/0/10	2	0.5	45
15/0/15	3	0.2	45
30/0/30	5	1	90
50/0/50	10	1	130
100/0/100	20	2	260
200/0/200	50	5	520
300/0/300	100	10	780
400/0/400	100	10	1040

\*Maximum pressure that can be admitted into Bourdon tubes.

**METRIC RANGES**

Type 1127 (270° dial arc)

PRESSURE RANGE		DIAL GRADUATIONS	
kg/cm <sup>2</sup>	bar	Figure Interval	Minor Graduation
0/1	0/1	0.2	0.02
0/2	0/2	0.5	0.05
0/4	0/4	0.5	0.05
0/7	0/7	0.5	0.05
0/11	0/11	2	0.2
0/14	0/14	2	0.2
0/21	0/21	5	0.5
0/28	0/28	5	0.5
0/42	0/42	5	0.5
0/56	0/56	10	1
0/70	0/70	10	1

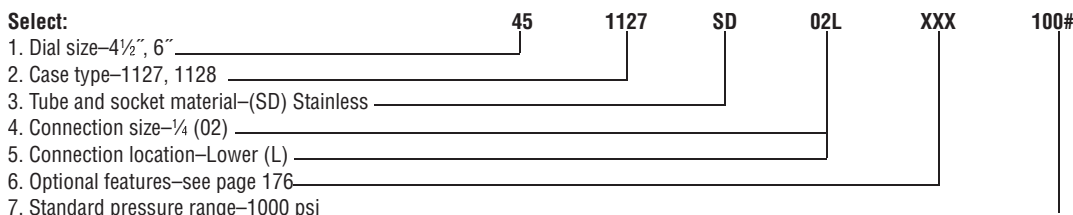
Type 1128 (210° dial arc) Zero centered dial

PRESSURE RANGE		DIAL GRADUATIONS	
kg/cm <sup>2</sup>	bar	Figure Interval	Minor Graduation
1/0/1	1/0/1	0.5	0.05
2/0/2	2/0/2	0.1	0.01
3.5/0/3.5	3.5/0/3.5	0.5	0.1
5.5/0/5.5	5.5/0/5.5	2	0.2
7/0/7	7/0/7	2	0.2
10.5/0/10.5	10.5/0/10.5	5	0.5
14/0/14	14/0/14	5	0.5
21/0/21	21/0/21	5	0.5
28/0/28	28/0/28	10	1
35/0/35	35/0/35	10	1

**CASE TYPE**

Gauge Type Number	Dial Size (inches)	Case & Ring Material Finish	Bourdon Tube & Tip Material	Socket Material	Pressure Range (psi)	Pointer	Movement	NPT Connection
DIFFERENTIAL 1127 1128	4½, 6	Case: Aluminum Ring: Threaded aluminum All black epoxy coated	316 stainless steel	316 stainless steel	10/1000	Adjustable	Bronze-brushed Overload & Vacuum Stops-Std.	¼

**TO ORDER THESE 1127, 1128 DIFFERENTIAL PRESSURE GAUGES:**



Consult factory for guidance in product selection  
 Phone (203) 385-0217, Fax (203) 385-0602 or  
 visit our web site at [www.ashcroft.com](http://www.ashcroft.com)