

Type 1122KE, 1122KF Special Application Gauge



Type 1122KE

FEATURES

- Accuracy ASME B40.100 Grade A ($\pm 2-1-2\%$ of span)
- Dial size 2½" only

The Ashcroft® Type 1122 is a specialized product used for pump, turbine and compressor applications.

TEMPERATURE LIMITS

	Ambient	Process	Storage
Dry	-20/200°F (-29/93°C)	-20/250°F (-29/121°C)	-40/250°F (-40/121°C)

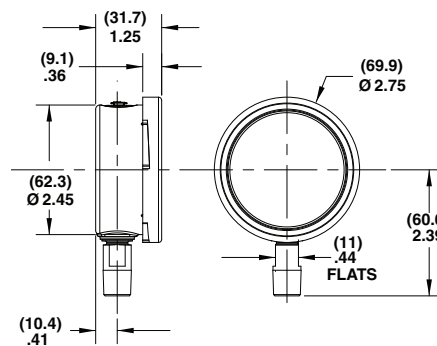
Note: Other than discoloration of the dial and hardening of the gasketing that may occur as ambient or process temperatures exceeds 150°F, non-liquid-filled gauges with polycarbonate windows, can withstand continuous operating temperatures up to 250°F (121°C) but the window will tend to yellow. Accuracy at temperatures above or below the reference ambient temperature of 68°F (20°C) will be affected by approximately .4% per 25°F (4°C). Gauges with welded joints will withstand 750°F (450°F) (232°C) for short times without rupture, although other parts of the gauge will be destroyed and calibration will be lost. For continuous use and for process or ambient temperatures above 250°F (121°C), a diaphragm seal or capillary or siphon is recommended.

PRODUCT SPECIFICATIONS

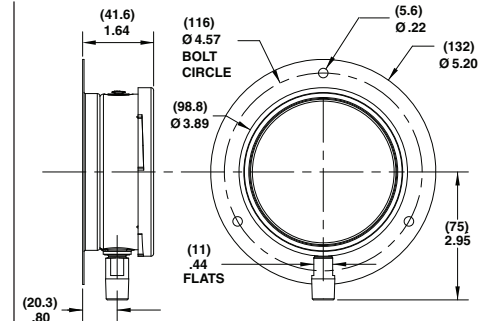
- Model Number:** 1122KE lower connect, 1122KF lower connect with back flange
- Accuracy:** 2%-1%-2% ASME Grade A
- Case Style:** Open Front (dry only)
- Case Material:** Stainless Steel
- Dial Size:** 2½" (25)
- Dial Material & Color:** White with Black Markings
- Ring Type:** 304SS, Bayonet
- Bourdon Tube Material:** 316 SS⁽¹⁾
- Socket Material:** Bronze⁽¹⁾
- Connection Size:** ¼ NPT
- Connection Location:** KE: Lower (L)
KF: Back (B)
- Range Limits:** 15-1000 psi
- Mounting:** Stem, Surface
- Pointer:** Non-Adjustable
- Window:** Polycarbonate
- Warranty:** 1 Year

⁽¹⁾ Joints welded

DIMENSIONS



2½" 1122KE Lower Connect



2½" 1122KF Lower Connect

CASE TYPE

Gauge Type Number	Dial Size (inches)	Case & Ring Material Finish	Bourdon Tube & Tip Material	Socket Material	Pressure Range (psi)	Pointer	Movement	NPT Connection
1122KE 1122KF	2½	Case: Stainless steel Ring: Bayonet Lock, St.St. Both polished	316 SS 316 SS	Bronze	15/1000	Adjustable	Stainless steel	¼

HOW TO ORDER:

- 25 1122KE 02L 0/1000#
1. Dial size—2½" _____
 2. Case type—1122KE _____
 3. _____
 4. Connection size—¼ (02) _____
 5. Connection location—Lower (L), Back (B) _____
 6. Standard pressure range—1000 psi _____

Type 1122KE, 1122KF Special Application Gauge

STANDARD METRIC RANGES							
Range		Dial Graduations		Range	Dial Graduations		Outer Scale When Dual Range Specified psi
kg/cm ² (Kilograms per sq. cm.)	Bar	Figure Interval	Minor Graduation	kPa (kilopascal)	Figure Interval	Minor Graduation	
Pressure							
0/1	0/1	0.1	0.01	0/100	10	1	0/14
0/1.6	0/1.6	0.2	0.02	0/160	20	2	0/22
0/2.5	0/2.5	0.5	0.05	0/250	50	5	0/35
0/4	0/4	0.5	0.05	0/400	50	5	0/55
0/6	0/6	0.5	0.1	0/600	50	10	0/85
0/10	0/10	1	0.1	0/1000	100	10	0/140
0/16	0/16	2	0.2	0/1600	200	20	0/220
0/25	0/25	5	0.5	0/2500	500	50	0/350
0/40	0/40	5	0.5	0/4000	500	50	0/550
0/60	0/60	5	1	0/6000	500	100	0/850
Compound							
-1/0/1.5	-1/0/1.5	0.5	0.05	-100/0/150	50	5	30" Hg/0/20
-1/0/3	-1/0/3	0.5	0.05	-100/0/300	50	5	30" Hg/0/40
-1/0/5	-1/0/5	0.5	0.1	-100/0/500	50	50	30" Hg/0/70

STANDARD RANGES (60° dial arc) except 15 psi - 45°		
Pressure (psi)	Figure Interval	Minor Grad.
0/15	5	1
0/30	10	2
0/60	15	5
0/100	20	10
0/160	40	10
0/200	50	10
0/300	100	25
0/400	100	25
0/600	150	50
0/1000	250	50