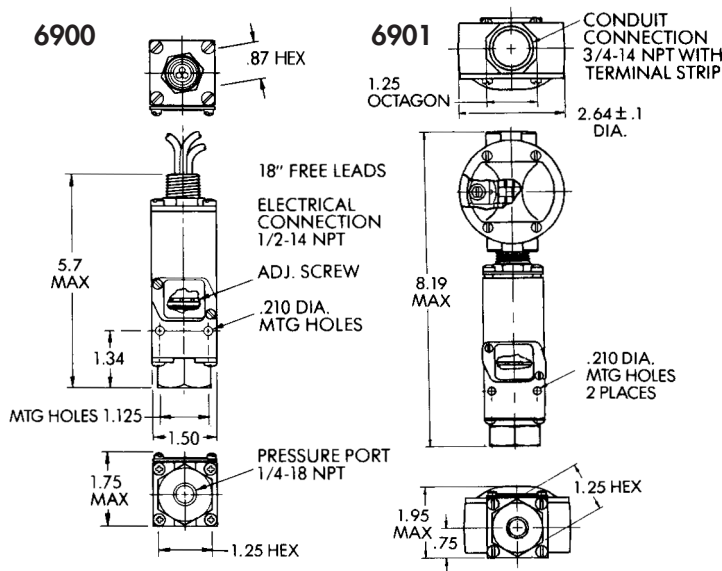


INSTALLATION DRAWING



6900G & 6900P
SHIPPING WT.
APPROX. 13 OZ.
(368 GRAMS)

6900GZ
SHIPPING WT.
APPROX. 15 OZ.
(425 GRAMS)

Press. 1 to 6500 psi

SERIES:
6900G
6900GZ
6900P

Standard Features:

- NEMA: 4, 13
- Weatherproof
- Model 6900

CSA

AMBIENT TEMP. RANGE

- 30° to 160° F
- 34° to 71° C

OPERATING AND ORDERING DATA:

PRESSURE SWITCHES MODEL 6900G		1/4" ALUMINUM PRESSURE PORT & POLYIMIDE DIAPHRAGM		Wetted Parts	Aluminum Polyimide Buna N	
Max Sys. Press. psi	Proof (Test) Press. psi	Adjustable Set-Point Range		Approx. Dead-band psi	Free Leads	
		On Incr. Press. psi	On Decr. Press. psi		MODEL SPDT-Std.	MODEL DPDT "M"
500	750	3-20	1-18	2	6900G12	6900GM12
500	750	6-75	2-71	4	6900G14	6900GM14
1500	2000	12-150	4-142	8	6900G16	6900GM16
1500	2000	30-375	10-355	20	6900G18	6900GM18
2000	3000	300-1000	250-950	50	6900G20	6900GM20
3000	4500	700-2500	600-2400	100	6900G22	6900GM22
PRESSURE SWITCHES MODEL 6900GZ		1/2" STAINLESS STEEL PRESSURE PORT & DIAPHRAGM		Wetted Parts	316 SST Viton	
500	750	3-20	1-18	2	6900GZ12	6900GZM12
500	750	9-75	3-69	6	6900GZ14	6900GZM14
1500	2000	18-150	6-138	12	6900GZ16	6900GZM16
1500	2000	45-375	15-345	30	6900GZ18	6900GZM18
2000	3000	300-1000	225-925	75	6900GZ20	6900GZM20
3000	4500	700-2500	520-2320	180	6900GZ22	6900GZM22
PRESSURE SWITCHES MODEL 6900P		1/4" ALUMINUM PRESSURE PORT		Wetted Parts	Aluminum 400 SST Buna N Teflon	
2000	3000	15-200	5-190	10	6900P32	6900PM32
3000	5000	150-1600	40-1490	110	6900P34	6900PM34
5000	7500	500-3200	330-3030	170	6900P36	6900PM36
10,000	13,000	2000-6500	1500-6000	500	6900P38	6900PM38

• FOR HIGH CYCLING - LONG LIFE - HYDRAULIC APPLICATIONS

• PISTON PRESSURE SWITCH
1/4" ALUMINUM PRESSURE PORT

ELECTRICAL CHARACTERISTICS:

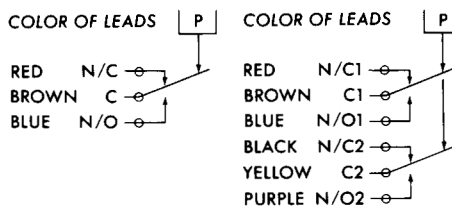
RATING OF SWITCH ELEMENT

VOLTS	AMPERES	
	SPDT	DPDT "M"
	Res.	Res.
125 AC - 50/60 Hz	11	11
250 AC - 50/60 Hz	11	11
30 DC	5	5
125 DC	.5	.5

SCHEMATIC AND WIRING CODE:

SPDT-Standard

DPDT "M"



ENCLOSURE/CERTIFICATIONS:

MODEL 6900 ONLY

CSA Certified for enclosure (4)
non-hazardous locations
(File No. LR22665).

HOW TO ORDER: Specify model number, add desired "options" listing letter codes first followed by numbers:
Custom Control Sensors, Inc. • 21111 Plummer Street, Chatsworth, CA 91311 • Tel: (818)341-4610 • Fax: (818)709-0426
e-mail: switchnet@ccsdualsnap.com • http://www.ccsdualsnap.com